

# **Health Inequalities: A Focus on Gypsy Roma Traveller (GRT) Communities**

**Doncaster Health and Wellbeing Board**

November 2023

Mandy Espey : Health Inequalities Lead, Doncaster PLACE

Marius Taba : GRT Community Link Worker, SY ICB

Whitley Smith : GRT Community Link Worker, SY ICB

# Aims of presentation

To increase awareness of HWB about:

- Inequalities facing our Gypsy Roma Traveller communities
- Impact of inequalities on health and wellbeing

Ask of HWB?

- What does the 'Be Kind Campaign' mean for our GRT communities?
- Support for more integrated approach to improving HWB of GRT Communities?



# GRT communities face some of most severe inequalities in healthcare access and outcomes

- GRT population Doncaster estimated 4000 (2<sup>nd</sup> largest SY)
- 900 permanent households
- Gypsy & Traveller people will live **between ten and 25 less years** than general population
- The average health of **60-year-olds** from Gypsy or Irish Traveller communities are similar to those of an average white **British 80-year-old**
- **Gypsy, Roma and Traveller** men were over **12 times more** likely to suffer with more than two physical health conditions than white British men
- Roma people had the **highest risk** of not being able to access health and social care services (Evens 2023)



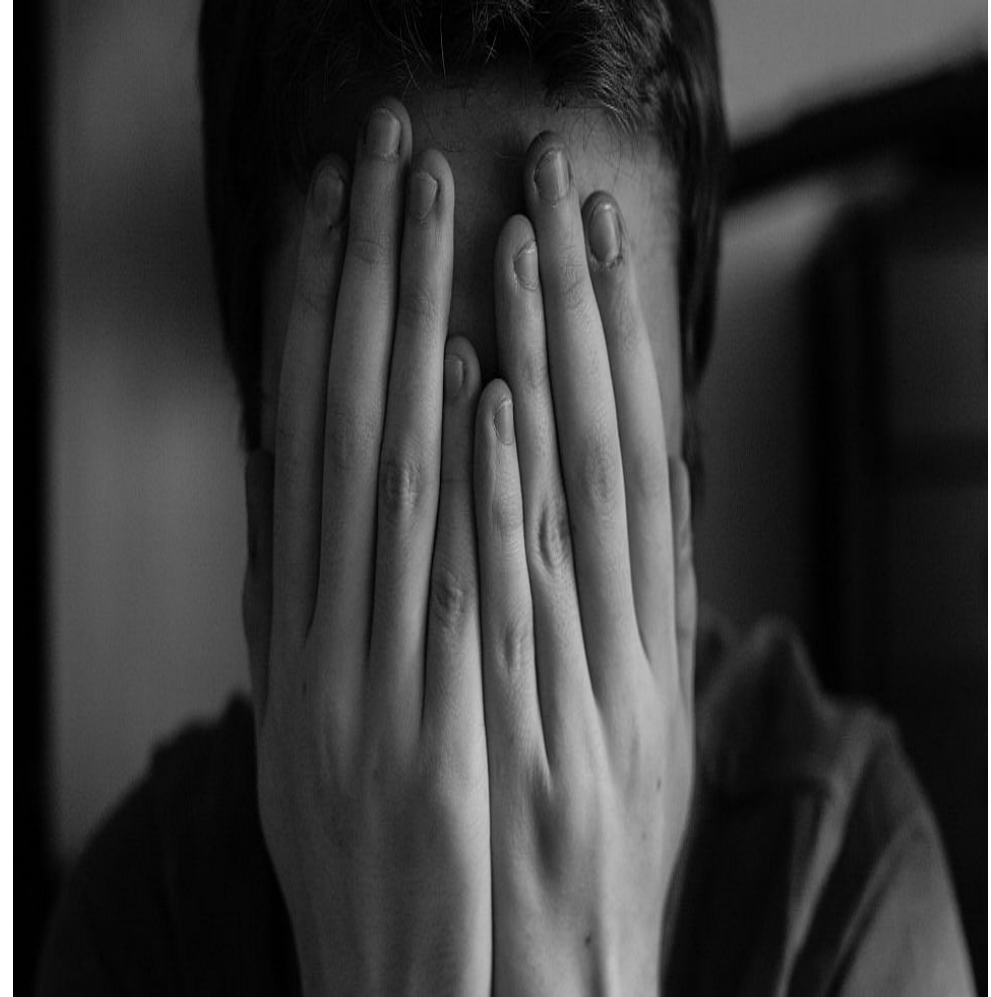
# Maternal Health GRT Communities



- G&T mothers are **20 times more likely to experience the death of a child**
- **29%** of Gypsy Roma and Traveller parents are **likely to experience one or more miscarriages** (compared 16% non-traveller group surveyed)
- Roma mothers experience **higher rates of poor infant outcomes**, such as pre-term births and low birth weight

# Mental Health and Suicide within GRT communities

- Evidence limited due to poor data collection
- Evidence shows high levels unmet need
- People GRT community **3 times** more **likely to be anxious**
- People GRT community **twice as likely to suffer from depression**
- Mental Health is **taboo subject**
- Men more likely to '**reach for the rope**' than talk
- Irish Travellers men are at **7 times** more likely to **die by suicide** and women **6 times**



# Challenges to accessing health and care



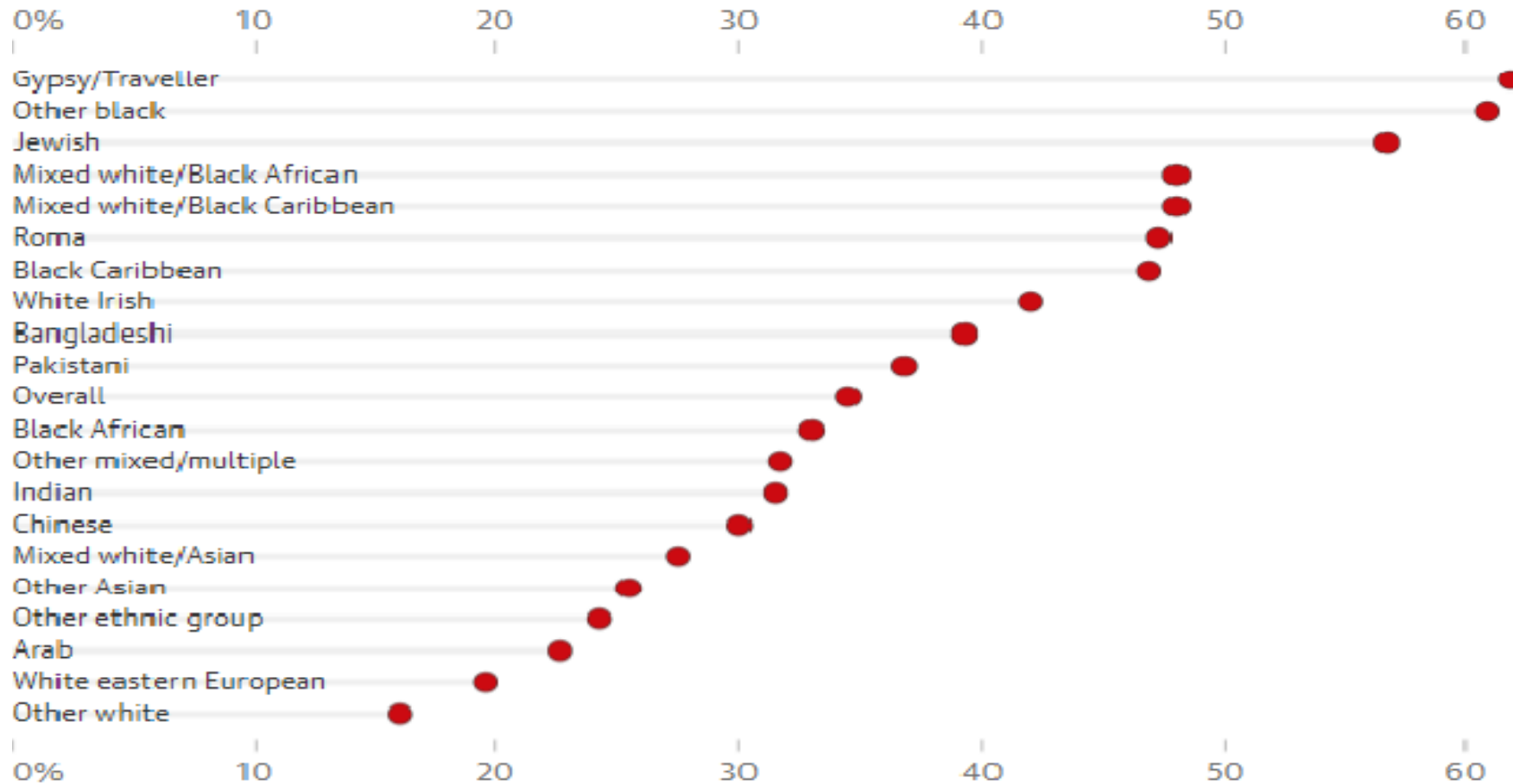
- **Hate crime, marginalisation, discrimination**
- Cultural beliefs
- Low or no literacy
- English not first language
- Digital exclusion
- Lack of education
- Poverty
- Transport
- Unconscious bias / staff attitude



# 2023 national survey by EVENS

## **More than a third of people from ethnic and religious minorities have experienced some form of racist assault**

% experiencing racist insults, property damage or physical attacks prior to the pandemic



Guardian graphic. Source: Evidence for Equality National Survey

# EVENS-Centre on the Dynamics of Diversity

The survey had the largest number of Gypsy, Roma and Traveller participants in any national survey to date

- **62% of Gypsies and Travellers** had experienced **racial abuse**, which was the highest out of all minority ethnic groups surveyed
- **47% of Roma** people had been **racially assaulted**
- **37% of Roma** people have been **physically attacked**

## Gate Herts 2020

- **'Hate crime against GRT is as regular as rain'** including health, education, on-line and media
- Despite **high levels crime, incidents under-reported**





# Wider effects of discrimination

- **Poor housing**, limited access amenities
- Gypsy, Roma and Traveller people experience the **highest levels of social and economic deprivation**
- More **than half** of Gypsy, Roma and Traveller people having no educational qualifications
- **85%** of Gypsy or Traveller men and **65%** of Roma men were in precarious employment, compared with 19% of white British men
- GRT community accounts **6% prison population**



# Gypsy Roma Traveller Children and Young People



- GRT pupils are statistically **most vulnerable** of any group in UK
- **86% of children** from GRT community reported **bullying** as their **biggest challenge at school**
- GRT Children leave **school early**
- ~50% GRT students persistent non-attenders
- GRT children have **lowest attainment of all ethnic groups**
- Make up **15% secure training units**



# Celebrating what is great about GRT communities

- Staunchly proud of distinct identity
- Family orientated, including extended family
- Take care of their older people
- Observe strict hygiene rules
- Strong work ethic
- Entrepreneurial
- Generous, giving to charity
- Strong faith



# A day in the life.....

Whitley Marie-Smith

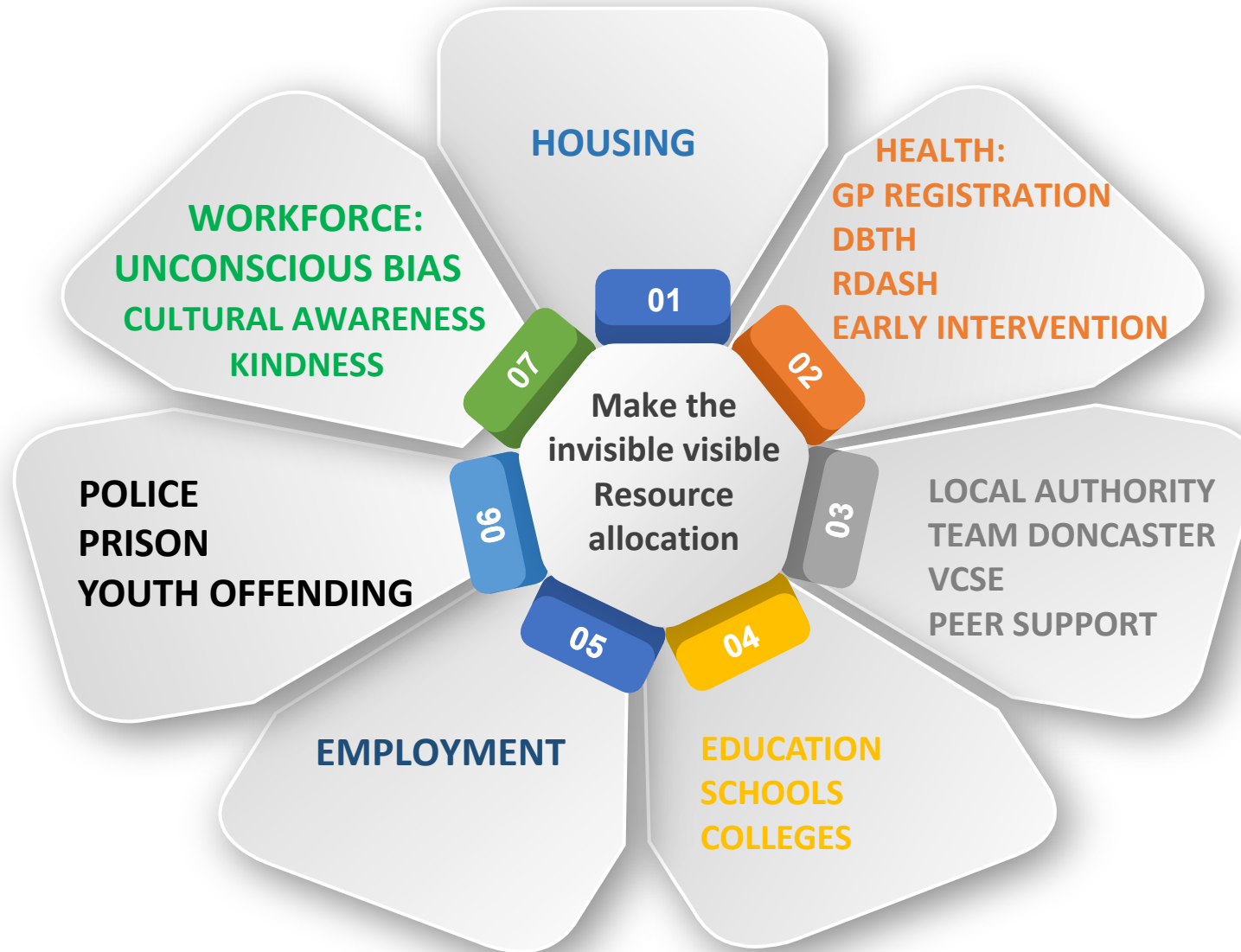
# In Summary

- GRT communities experience worst inequalities, resulting in poor mental health and physical health outcomes
- Hate crime and marginalisation is the biggest challenge that these communities face when accessing health and care services
- Discrimination affects children and schooling early in their lives and impacts on their adult lives
- How do we approach with HWB lens and less of an enforcement lens?



# Bold and Brave Leadership:

## Being KIND and Working together to improve GRT Health and Wellbeing





# Ask of Health and Well-Being Board

- What does the 'Be Kind Campaign' mean for our GRT communities?
- Do you support a more integrated approach to improving HWB of GRT Communities?